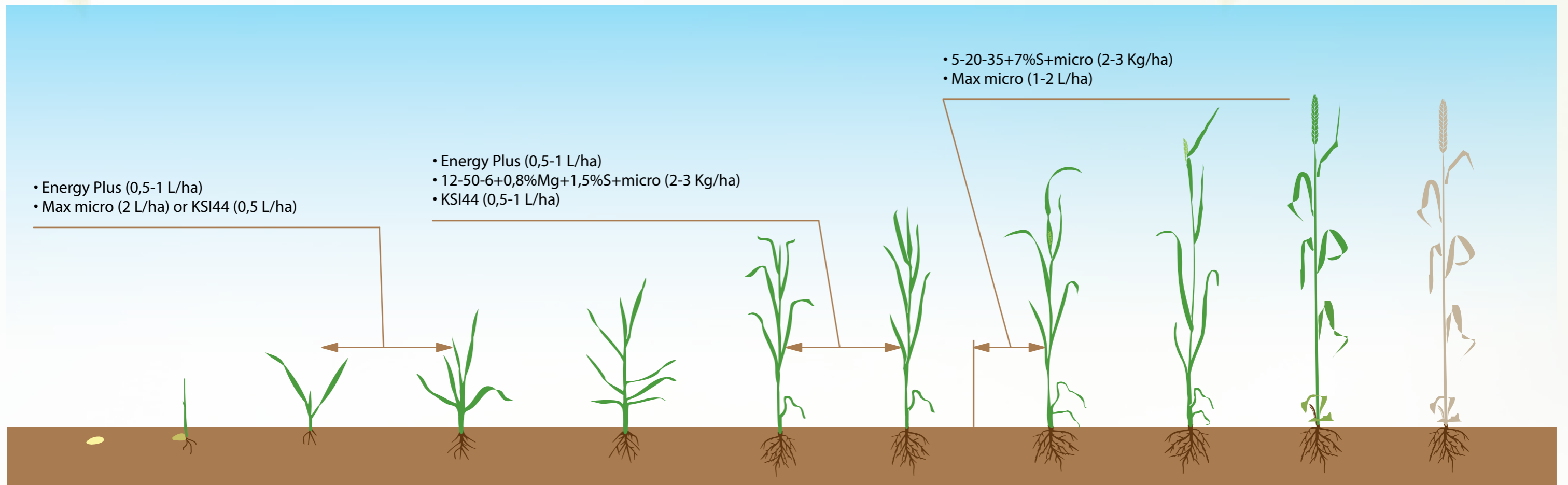



Winter Wheat Growth Technology



Plant growth stages	Before sowing	Sowing, germination	Tillering (emergence)	Tillering	Winter	Tillering	Stem elongation	Opening of tube	Booting	Flowering	Maturation	Harvest	After harvest
		0-9	10-19	20-29		20-29	30-39	40-49	50-59	60-69	70-99		

Winter Wheat Growth Technology. Benefits.

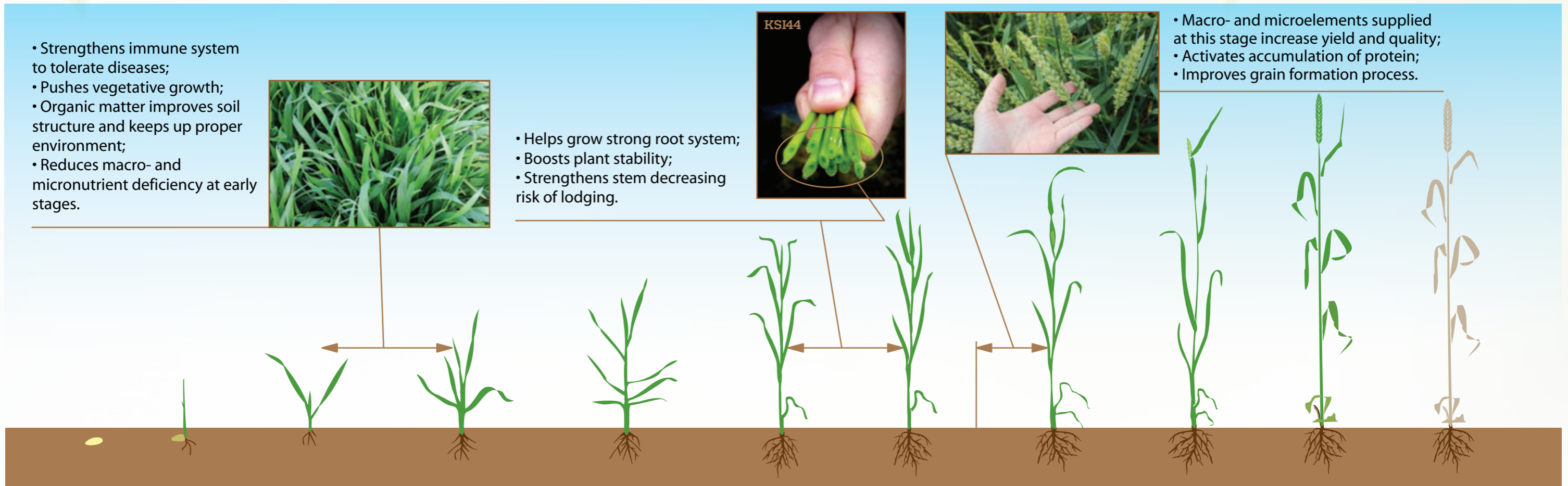
- Strengthens immune system to tolerate diseases;
- Pushes vegetative growth;
- Organic matter improves soil structure and keeps up proper environment;
- Reduces macro- and micronutrient deficiency at early stages.



- Helps grow strong root system;
- Boosts plant stability;
- Strengthens stem decreasing risk of lodging.



- Macro- and microelements supplied at this stage increase yield and quality;
- Activates accumulation of protein;
- Improves grain formation process.



Plant growth stages	Before sowing	Sowing, germination	Tillering (emergence)	Tillering	Winter	Tillering	Stem elongation	Opening of tube	Booting	Flowering	Maturation	Harvest	After harvest
		0-9	10-19	20-29		20-29	30-39	40-49	50-59	60-69	70-99		